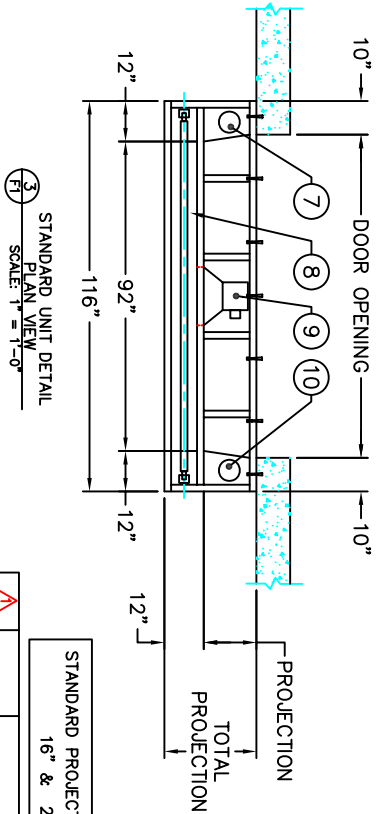


| No. | DESCRIPTION  |
|-----|--|
| 1   | GALVANIZED STEEL SIDE SUPPORT                                |
| 2   | HEAD BAG RETRACTION SYSTEM – STABILIZER                      |
| 3   | HEAD BAG   |
| 4   | VERTICAL AIR BAR   |
| 5   | 2" x 10" WOOD BACKBOARD                                      |
| 6   | BOTTOM FLAP  |
| 7   | GALVANIZED AIR DUCT  |
| 8   | HEAD BAG RETRACTION SYSTEM – SPRING                          |
| 9   | 0.5 HP, 1 Ph., 115/230 V, 50/60 Hz, 1420+1600 RPM, 5.5+2.8 A |
| 10  | VERTICAL AIR BAG – TOP VIEW                                  |
| 11  | TRIM ANGLE   |
| 12  | STORAGE CURTAIN  |
| 13  | EXTERIOR RETRACTION ADJUSTMENT                               |
| 14  | FOAM STABILIZING ADDITIVE                                    |
| 15  | ANGLE BRACKETS   |
| 16  | FLAT BRACKETS  |
| 17  | YELLOW GUIDE STRIPE  |
| 18  | INTERNAL BAFFLE  |



STANDARD PROJECTIONS ARE:  
16" & 20"

NOTES: 1) ALL DIMENSIONS ARE STANDARD AND IN IMPERIAL SYSTEM.  
2) UNITS CAN BE MANUFACTURED TO SUIT.  
3) DRAWINGS NOT TO BE SCALED.

|                |                                   |
|----------------|-----------------------------------|
| LDC            |                                   |
| SERIES         | D350                              |
| TITLE:         | ADJUSTABLE HEADER INFLATABLE SEAL |
| DISTRIBUTED BY |                                   |

| REV.#          | DATE  | DESCRIPTION | BY         |
|----------------|-------|-------------|------------|
| 1              |       |             |            |
| DATE: 06/25/07 | SHEET | OF          | DWG.# D350 |
| REV. 0         |       |             |            |