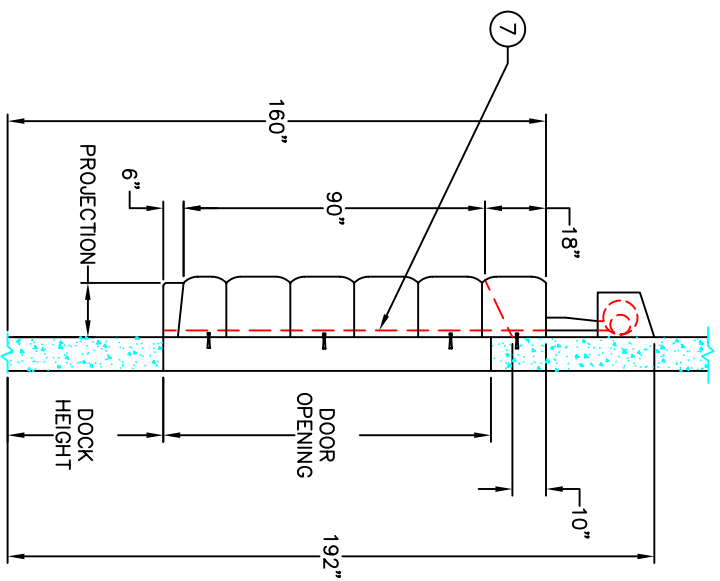
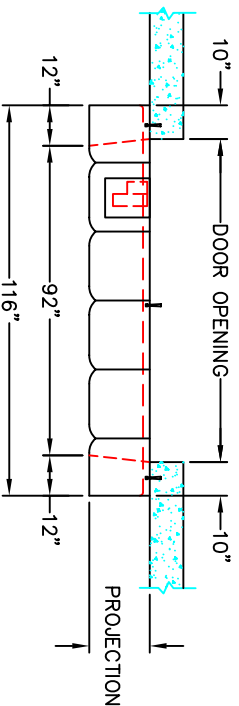


1 STANDARD UNIT DETAIL  
ISOMETRIC VIEW  
N.T.S.



2 STANDARD UNIT DETAIL  
SIDE VIEW  
SCALE: 1" = 1'-0"



3 STANDARD UNIT DETAIL  
PLAN VIEW  
SCALE: 1" = 1'-0"

STANDARD PROJECTIONS ARE:  
14", 18" & 22"

| No. | DESCRIPTION   |
|-----|---|
| 1   | MOTOR / BLOWER<br>(1/12 HP, 1 Ph., 115 V, 60 Hz, 1550 RPM, 2.4 A) |
| 2   | GALVANIZED STEEL HOOD   |
| 3   | VERTICAL AIR BAG  |
| 4   | HEADER AIR BAG  |
| 5   | 4" x 24" YELLOW GUIDE STRIPE                                      |
| 6   | BOTTOM FLAP   |
| 7   | 2" x 10" WOOD BACKBOARD   |
| 8   | INTERNAL BAFFLE   |
| 9   | 3/8" x 3" SLEEVE ANCHOR   |

NOTES: 1) ALL DIMENSIONS ARE STANDARD AND IN IMPERIAL SYSTEM.  
2) UNITS CAN BE MANUFACTURED TO SUIT.  
3) DRAWINGS NOT TO BE SCALED.

|                |                                   |
|----------------|-----------------------------------|
| <b>LDC</b>     |                                   |
| SERIES         | D150                              |
| TITLE:         | FIXED HEADER INFLATABLE DOCK SEAL |
| DISTRIBUTED BY |                                   |

| REV.# | DATE | DESCRIPTION | BY |
|-------|------|-------------|----|
| 1     |      |             |    |

|                |       |    |            |        |
|----------------|-------|----|------------|--------|
| DATE: 06/25/07 | SHEET | OF | DWG.# D150 | REV. 0 |
|----------------|-------|----|------------|--------|