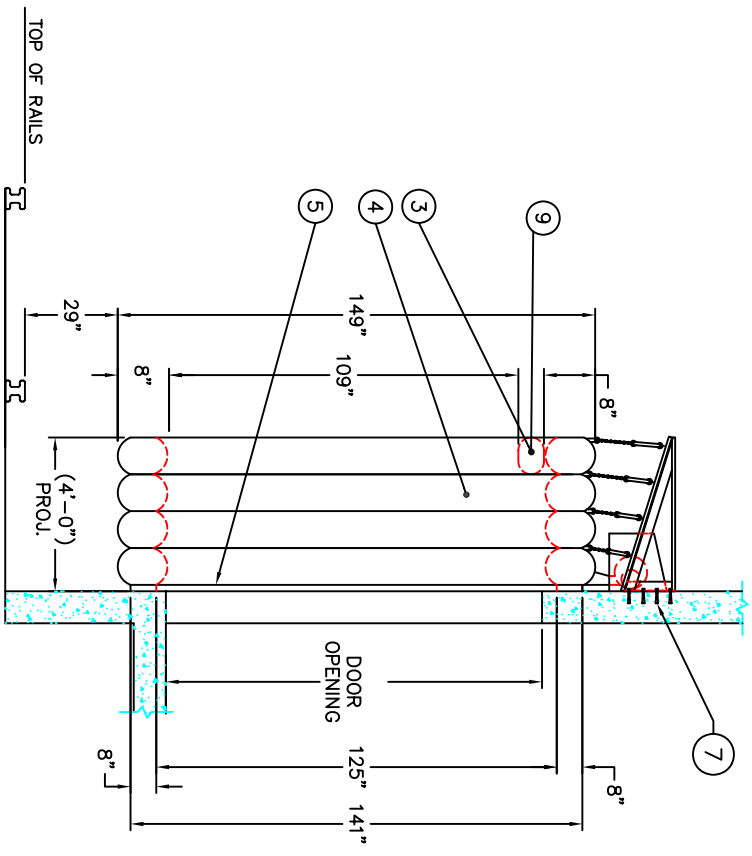
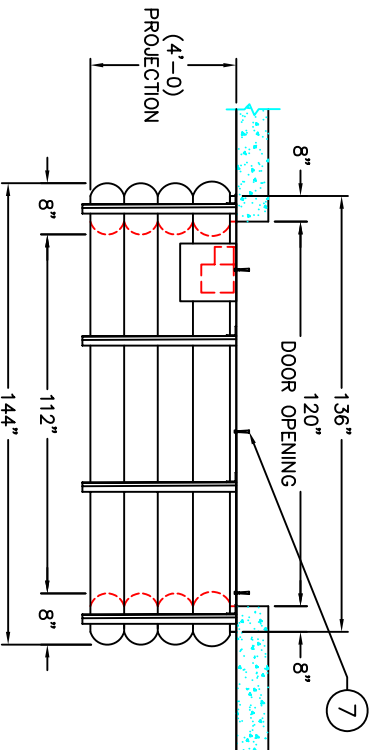


1  
F1  
STANDARD UNIT DETAIL  
ISOMETRIC VIEW  
N.I.S.

No.	DESCRIPTION
1	0.5 HP, 1 Ph., 115/230 V, 50/60 Hz, 1420+1600 RPM, 5.5+2.8 A MOTOR / BLOWER
2	GALVANIZED STEEL HOOD
3	VARIABLE HEAD BAG EXTENSION
4	INFLATABLE BAG
5	2" x 8" WOOD BACKBOARD
6	RAIL
7	3/8" DIA. x 4" LG. SLEEVE ANCHOR BOLT
8	UNIT SUPPORT ASSEMBLY (3 x 3 x 1/4 ANGLE, 1 x 1 HSS TUBING, 1 x 1 FABRICATED TRACK, 3/16" DIA. GALVANIZED CHAIN, RUBBER CORD, PLASTIC ROLLERS)



2  
F1  
STANDARD UNIT DETAIL  
SIDE VIEW  
SCALE: 1" = 1'-0"



3  
F1  
STANDARD UNIT DETAIL  
PLAN VIEW  
SCALE: 1" = 1'-0"

NOTES: 1) ALL DIMENSIONS ARE STANDARD AND IN IMPERIAL SYSTEM.  
2) UNITS CAN BE MANUFACTURED TO SUIT.  
3) DRAWINGS NOT TO BE SCALED.

REV.#	DATE	DESCRIPTION	BY
1			

DISTRIBUTED BY		DATE: 26/06/07	
TITLE:		SHEET OF	
		DWG.# D650	
		REV. 0	